

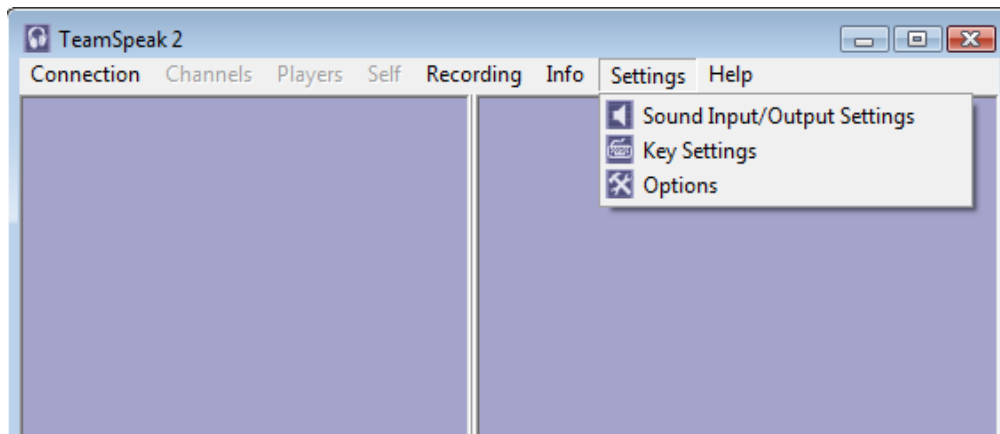
Virtual Flight Simulation Club

Daniel Webster College

2/18/2008

Team Speak R2 Installation and Setup instructions

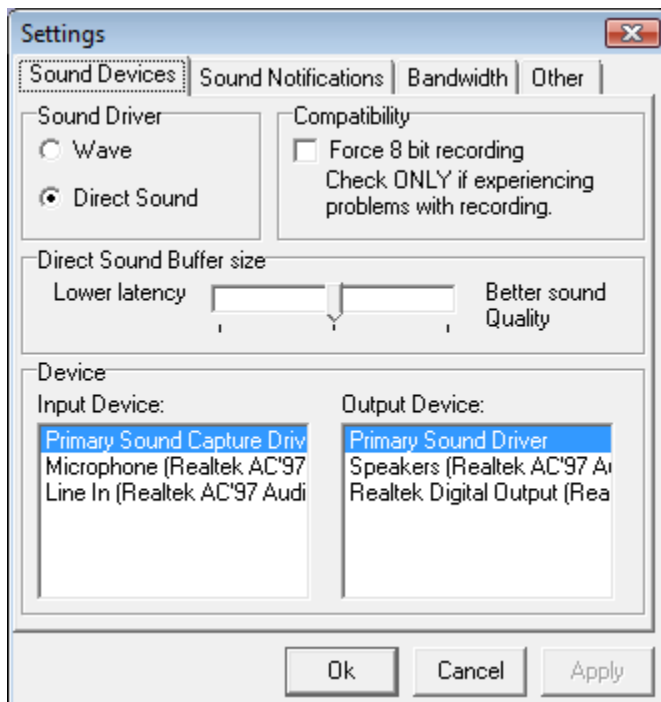
1. Download the Team Speak Client from the VFSC Website (<http://students.dwc.edu/vfsc>). Go to the "downloads" section, click on the link for "Team Speak Client," and click "Run" at the dialogue.
2. During the installation, after accepting the terms and conditions, click "Next" at all prompts for a standard installation. After the program is installed it will install the necessary Codecs. Click "Next" to install the necessary Codecs, then "Finish" to complete the installation.
3. Team Speak will open after the installation (if it doesn't, find Team Speak in the Start menu and run the program).
4. On the menu bar, click on "Settings", then "Sound Input/Output Settings".



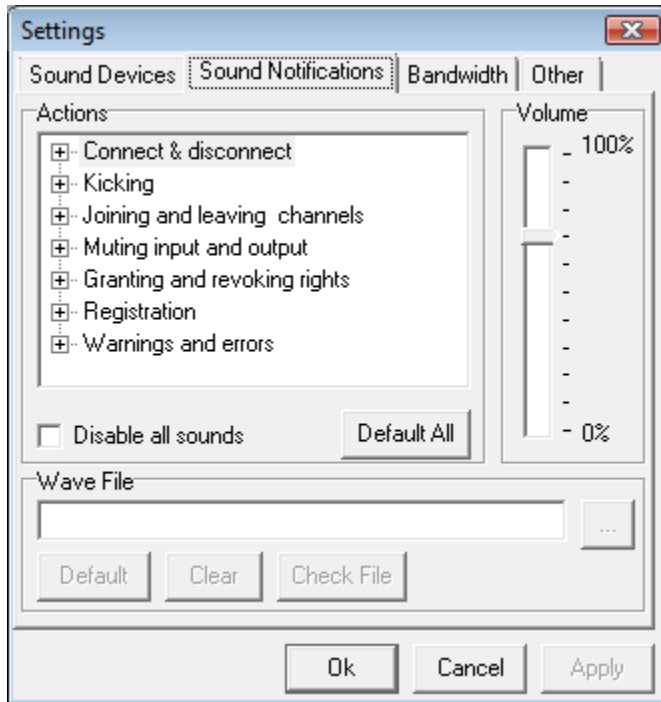
5. In the settings screen, click the "Push to talk" radio button, then click "Set" and then your push to talk key. Typically these keys will be either the left CTRL key, or the Insert key on the keyboard. You may choose any key that has no function in Flight Simulator. This takes the place of the mic button on the aircraft yolk. After your button is set, click on the "Activate local test mode" button and click your push to talk key a few times to make sure the green light comes on. Click "Deactivate local test mode" then "Close" to exit the settings window.



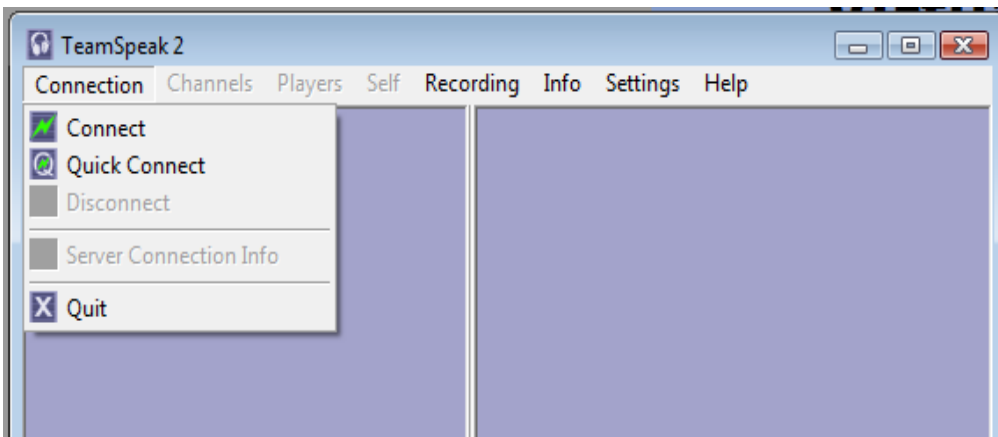
6. Click on “settings at the top menu again and choose “Options”. In the default “Sound Devices” tab, make sure that either your “Primary Sound Capture Driver” OR your “Microphone” is selected under the “input device” area, and that either your “Primary Sound Driver” OR your “Speakers” are selected under the Output Device area.



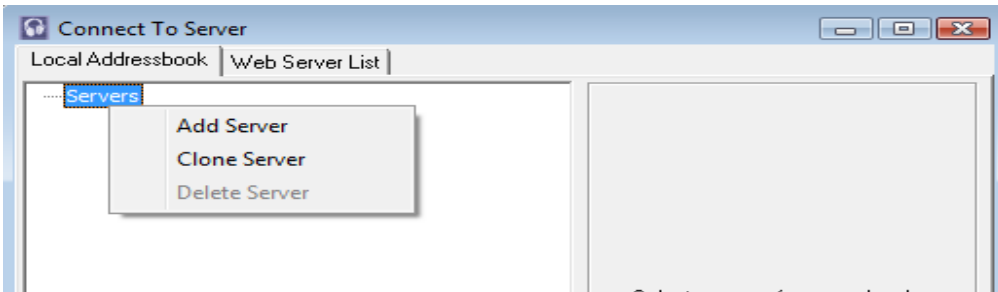
- Click on the "Sound Notifications" tab at the top of the same settings window. Make sure that "Disable all sounds" is NOT checked. This will ensure that you are notified when a controller switches your channel to another controller.



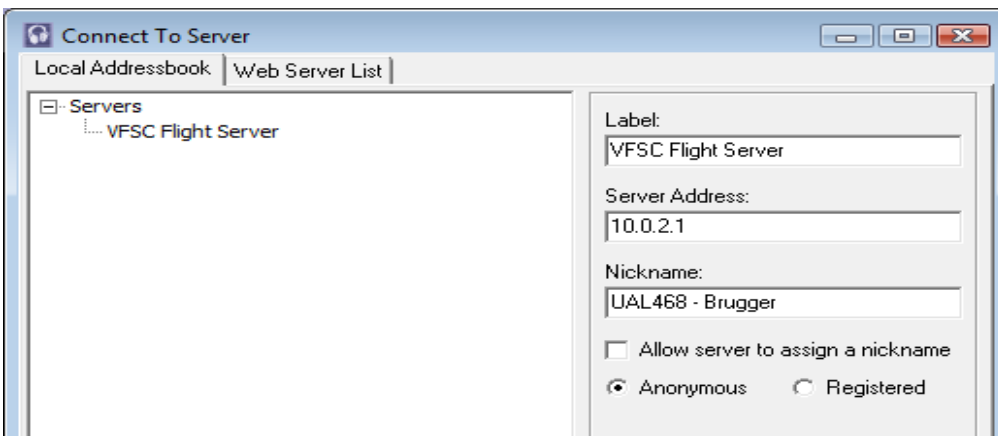
- Click "OK" to close the dialogue box.
- Click on "Connection at the top, then choose "Connect."



- Right-click on "Servers" and choose "Add Server" and name it "VFSC Flight Server."



11. In the right hand pane, notice the "Label" field has been filled in for you with the server name. In the "Server Address" field, fill in the IP address listed on the VFSC Website Events section. This demo does NOT list the IP address you should use. Please see the website for the proper IP address. Your "Nickname" should be your call sign. Make sure the box to "Allow server to assign a nickname" is NOT checked and that "Anonymous" is selected. Leave the rest of the fields empty. Your call sign may be anything you would like as long as it is either a US "N" number (N433MS - Smith) OR a registered airline designation (UAL835 - Jones). "Maverick" and "Ice Man" are not acceptable. You must tag your last name onto the end of your call sign.



12. Click on "Connect" to connect to the server and save your settings.
13. Click on "Connection" -> "Disconnect" to disconnect from the server. Try connecting to the server again. Did the software save your connection settings? If it did, just click on "Connect" at the bottom again and you are all set. You are now ready to speak to your Air Traffic Controllers.

Please direct any questions or installation problems to Andy Brugger at brugger_andrew@dwc.edu.